

NEWELL ST. WALL SECTION

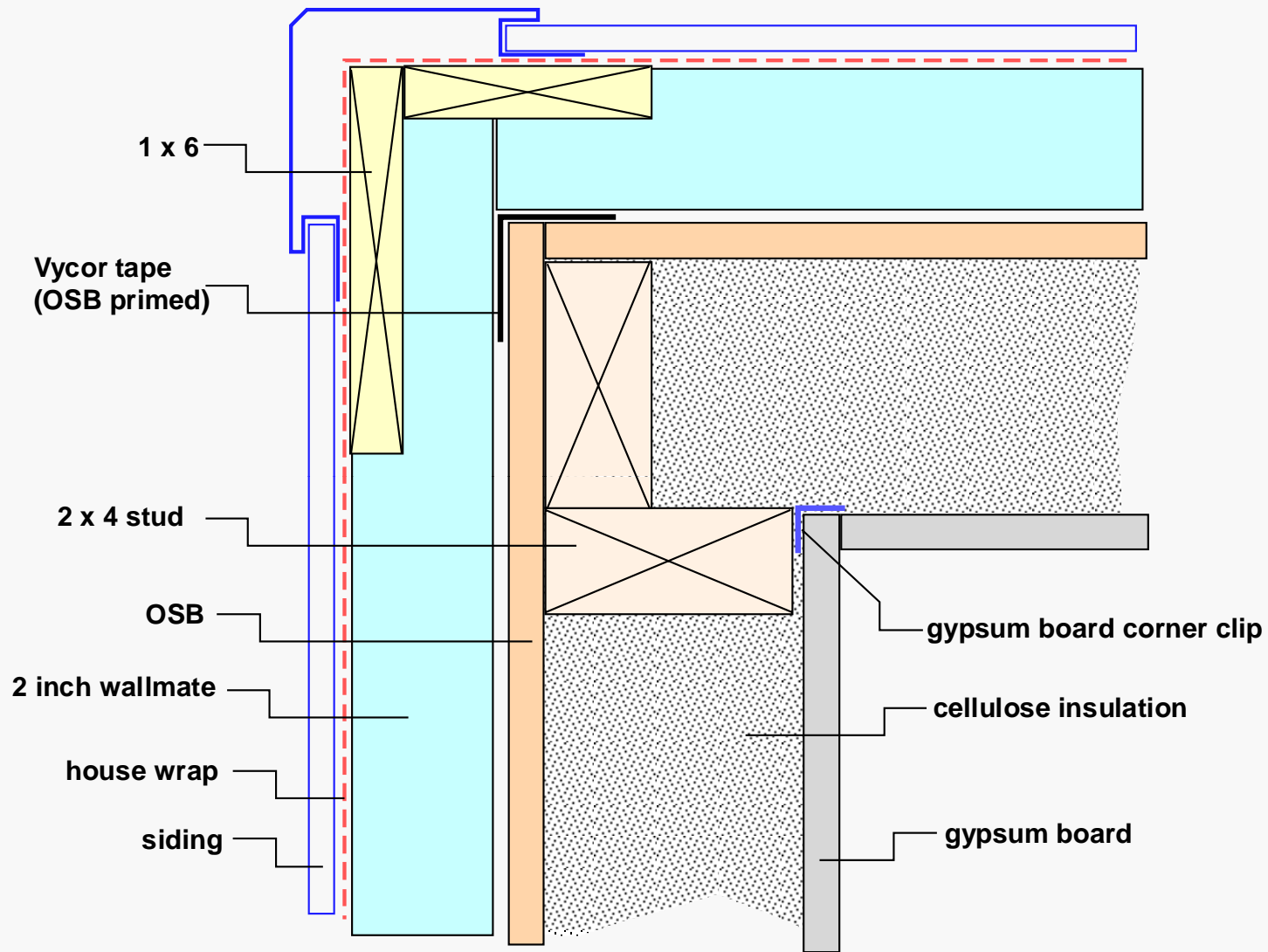


Figure 1. Plan section of exterior corner.

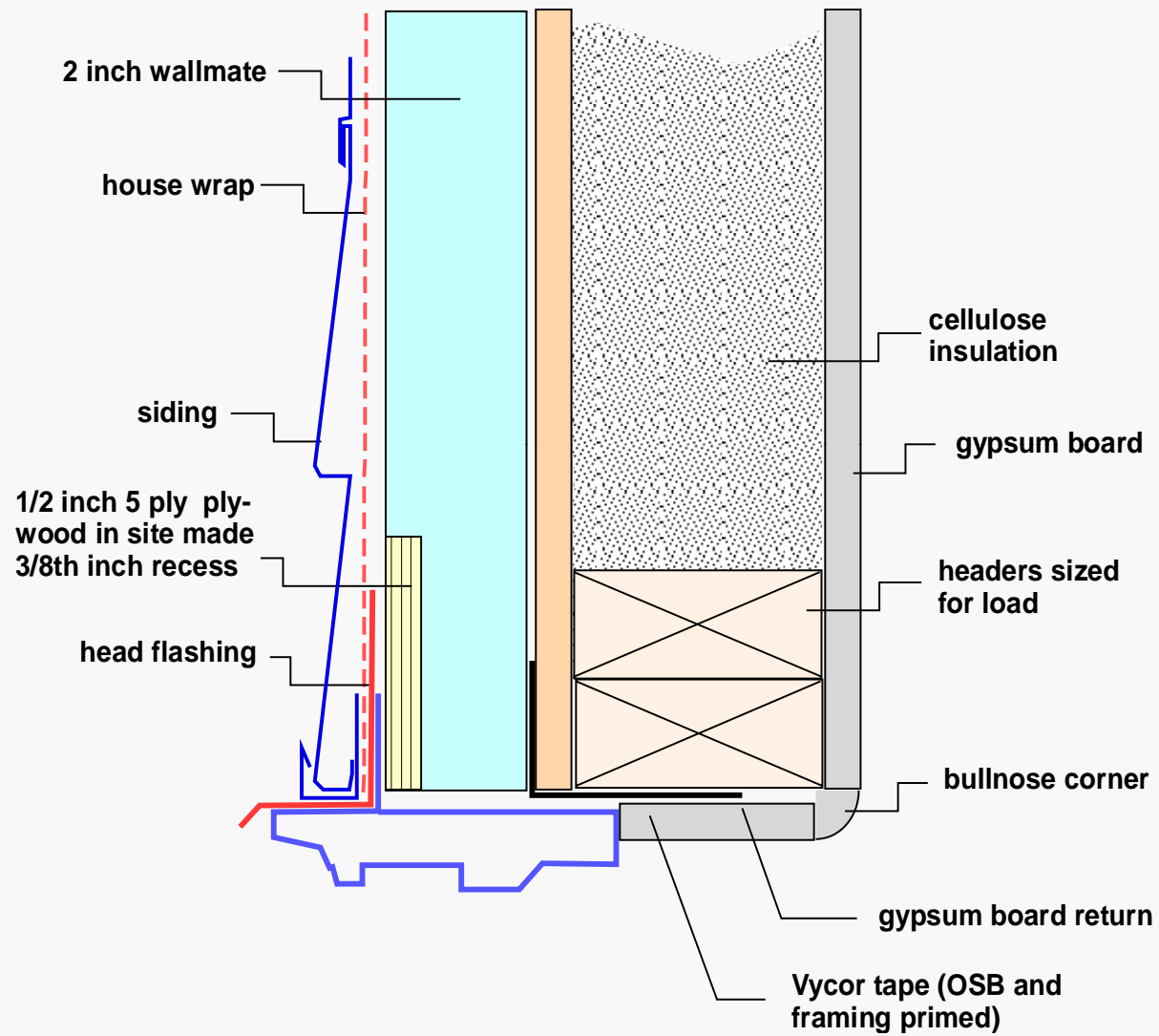


Figure 2. Window head detail.

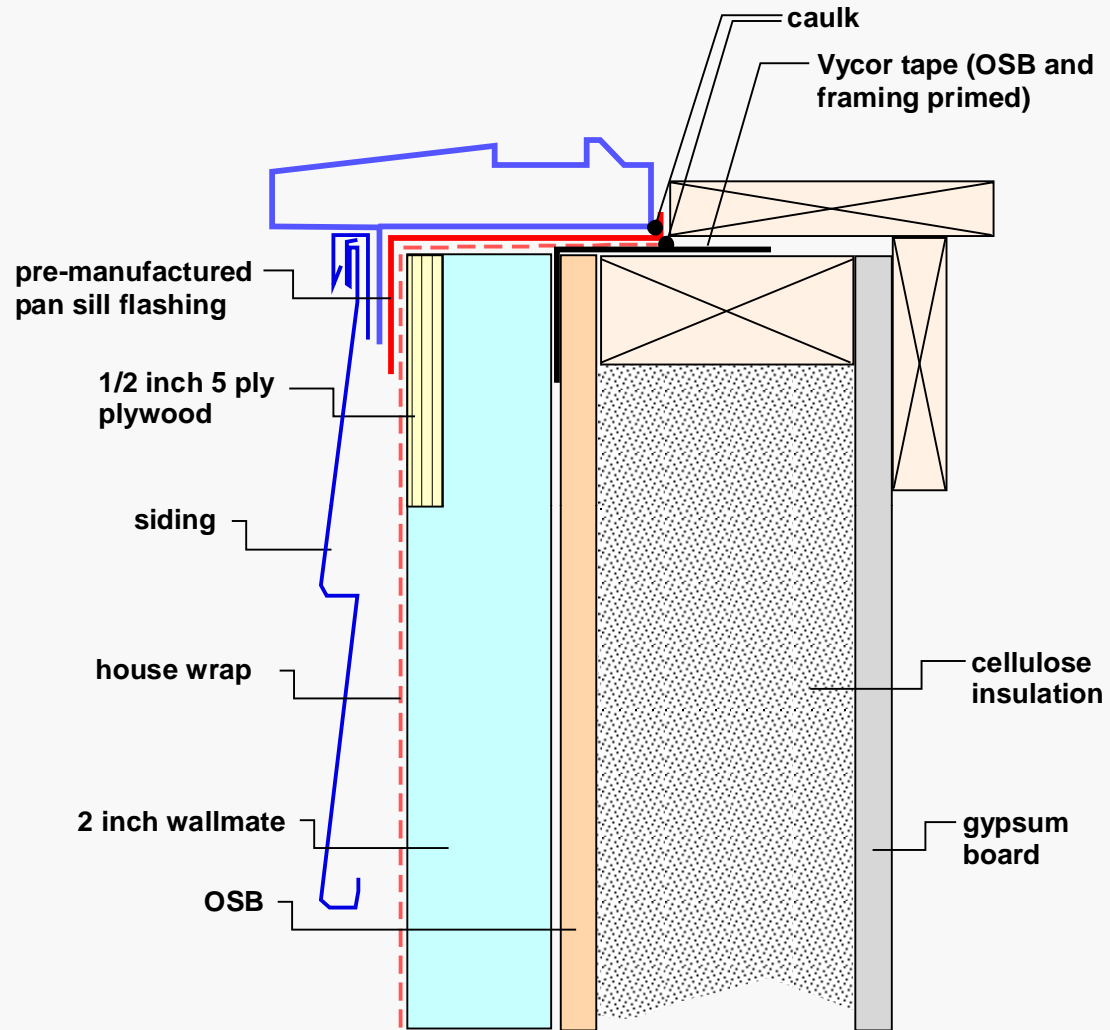


Figure 3. Window sill detail.

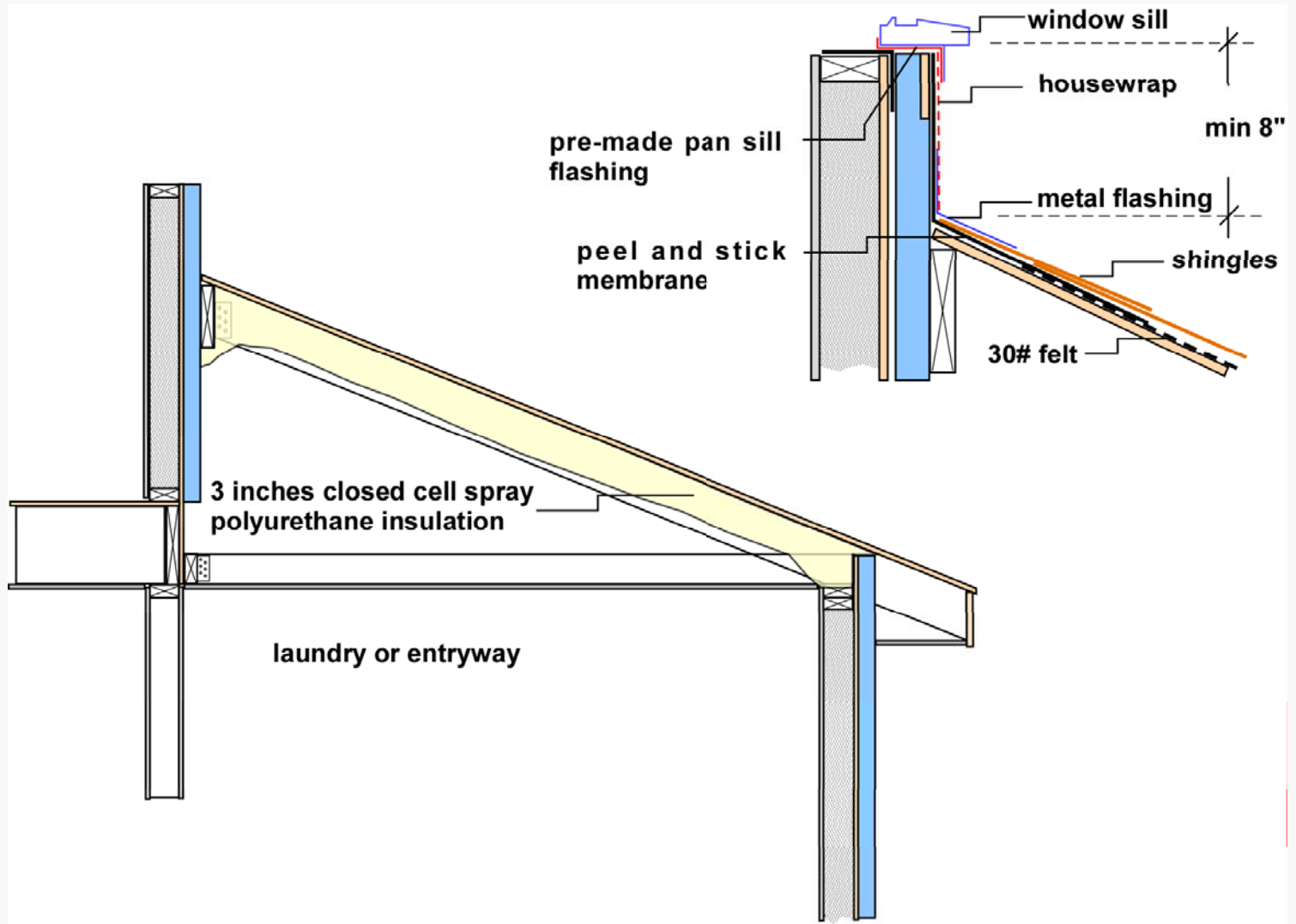


Figure 4. Insulated roof above laundry - powder room. Section through entry attic done same way.

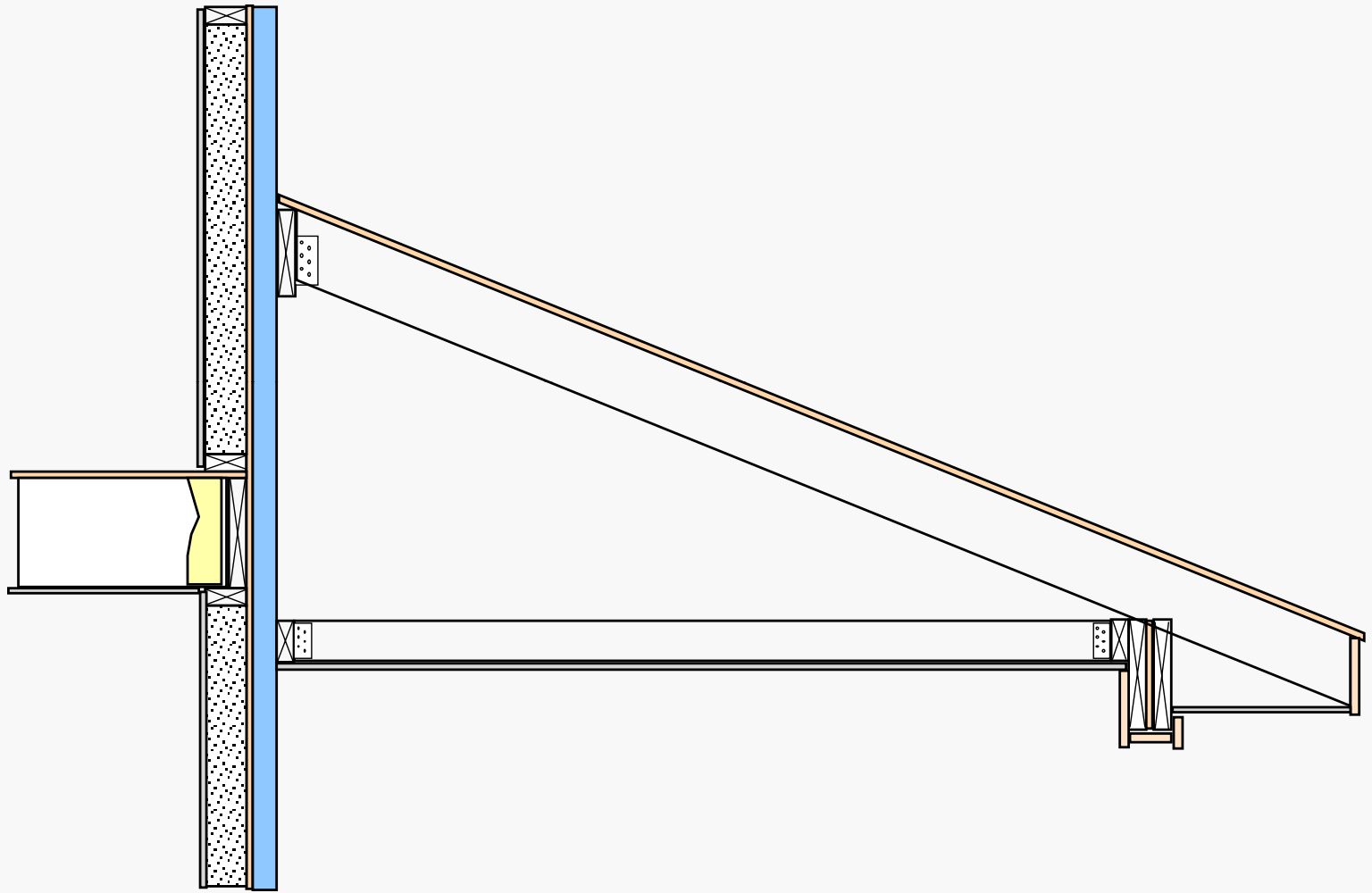


Figure 5. Porch roof section.

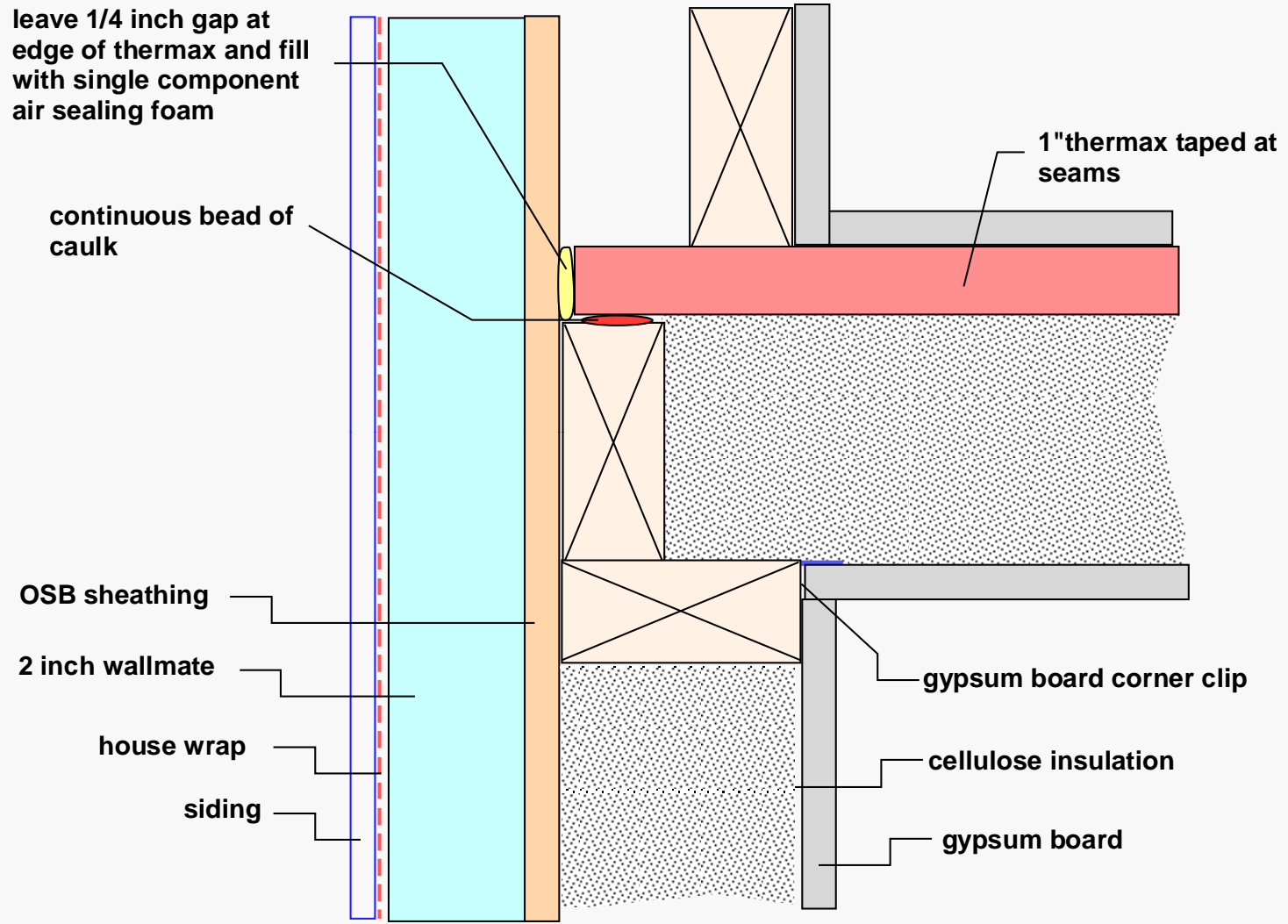


Figure 6. Plan section of intersection of exterior garage wall, exterior stairwell wall and garage/stairwell wall.

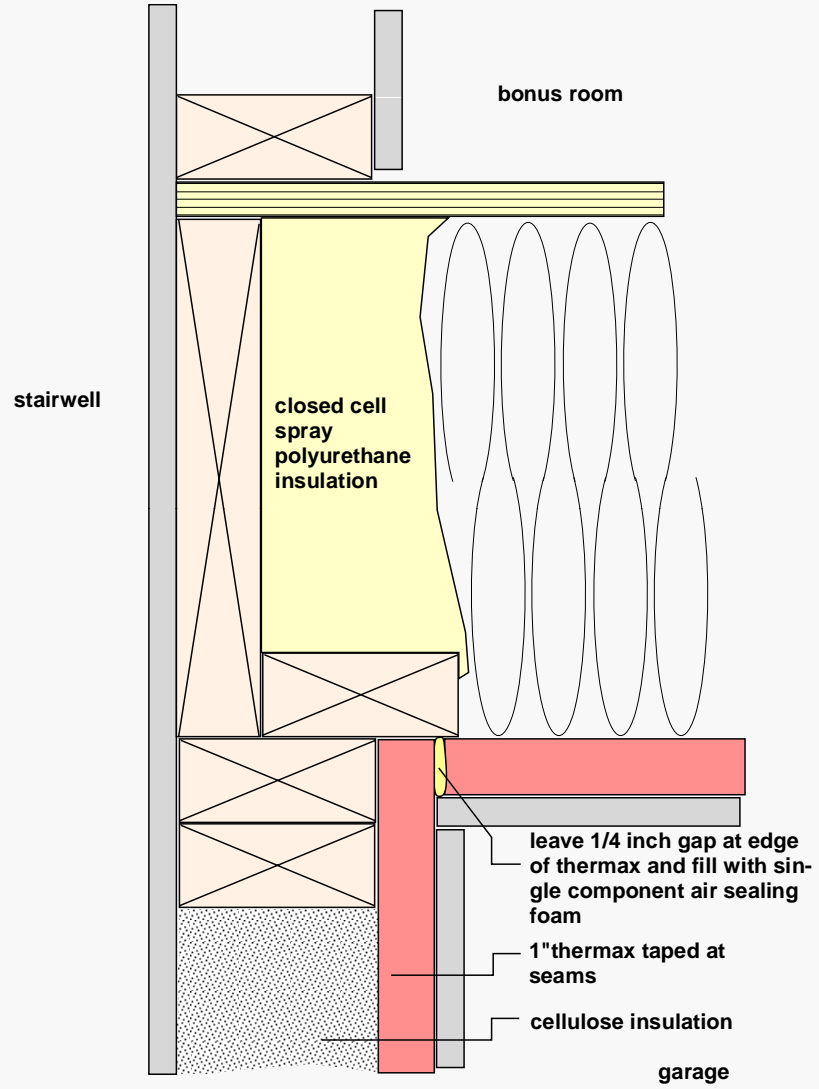


Figure 7. Intersection of stairwell/garage wall, bonus room wall and floor between bonus room and garage

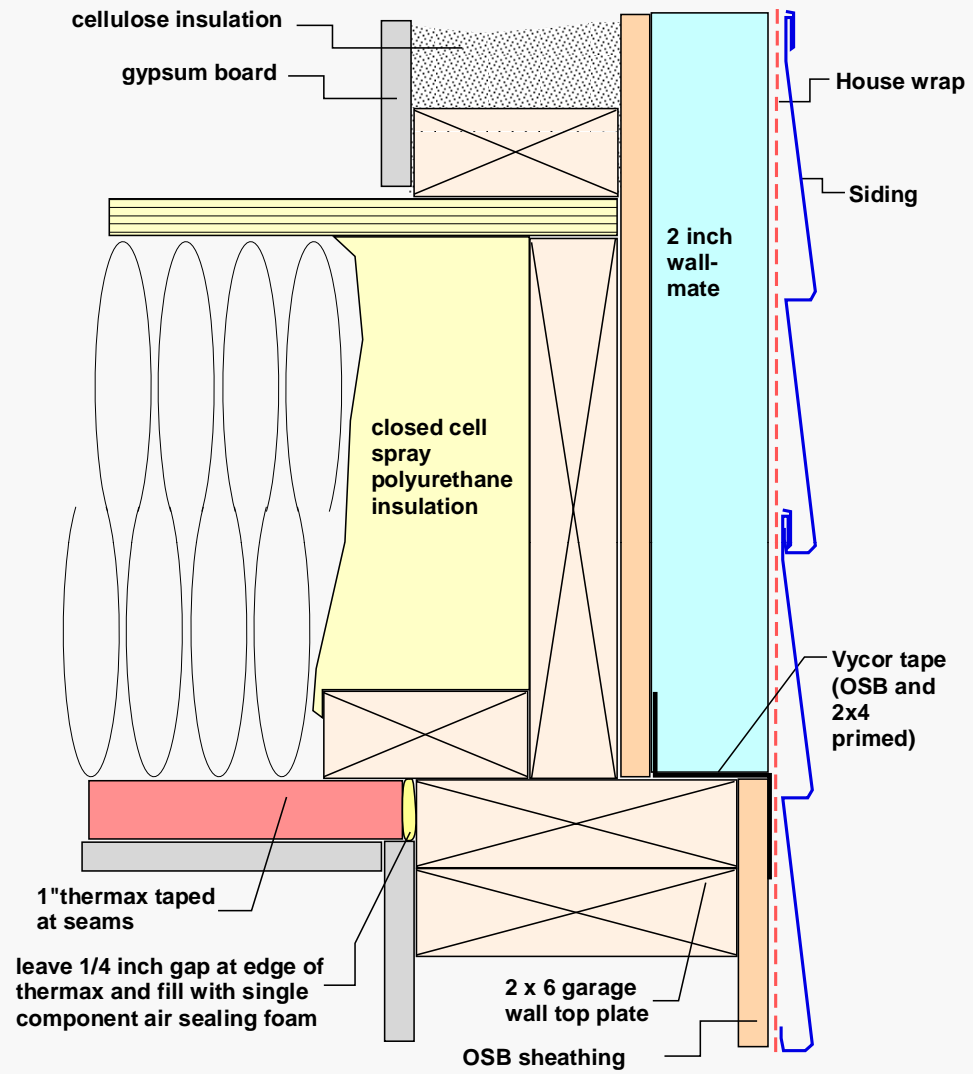


Figure 8. Intersection between garage exterior wall, bonus room gable end wall and floor between bonus room and garage.

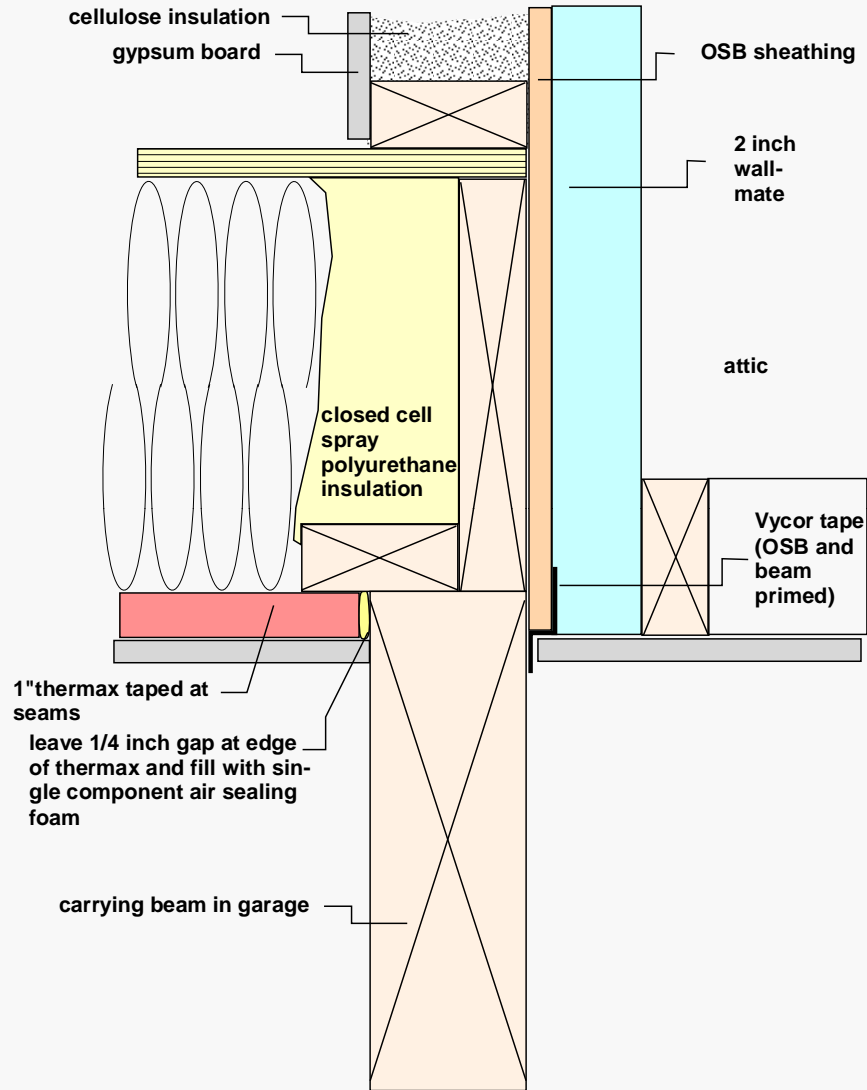


Figure 9. Section through bonus room floor, carrying beam and attic space above garage.

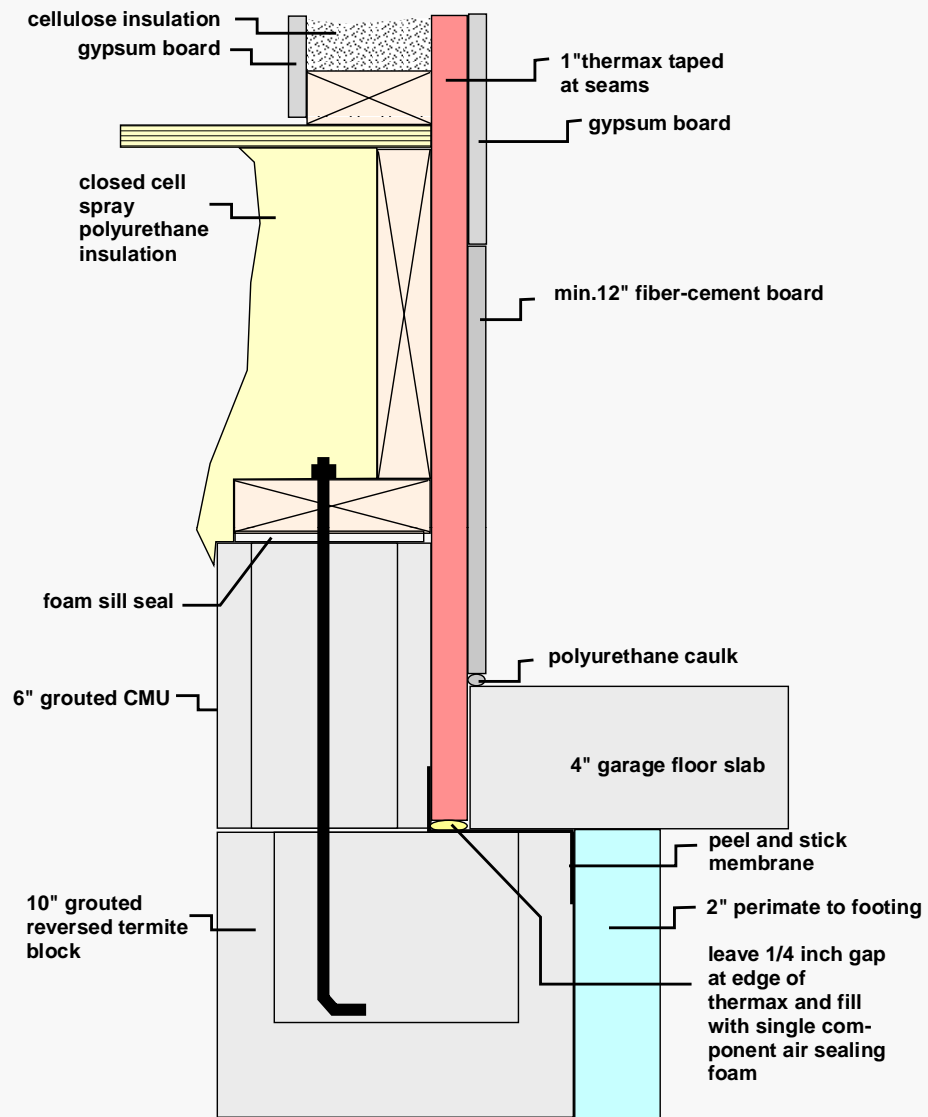


Figure 10. Intersection of basement wall, garage floor and garage/house wall.

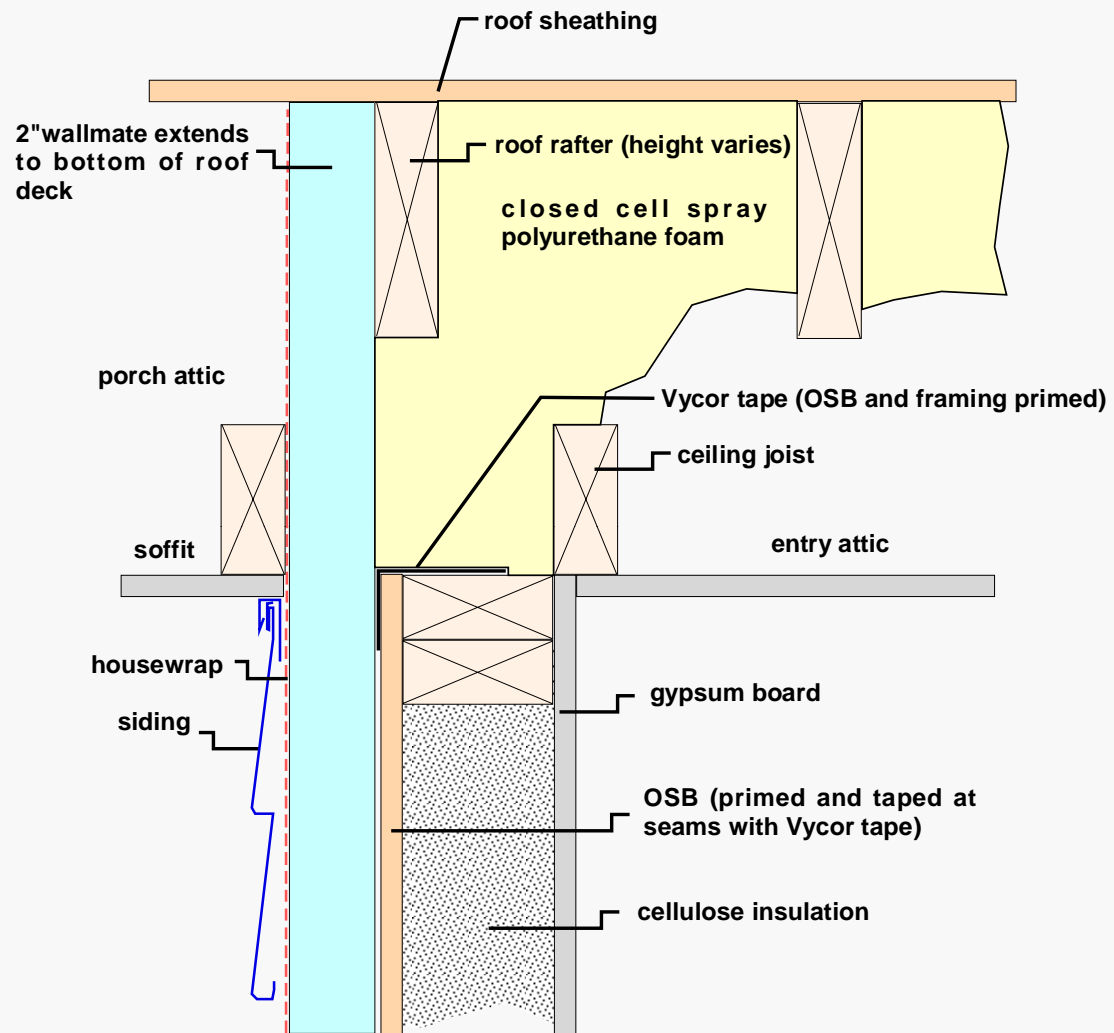


Figure 11. Detail of entryway exterior wall, attic space and entryway roof.

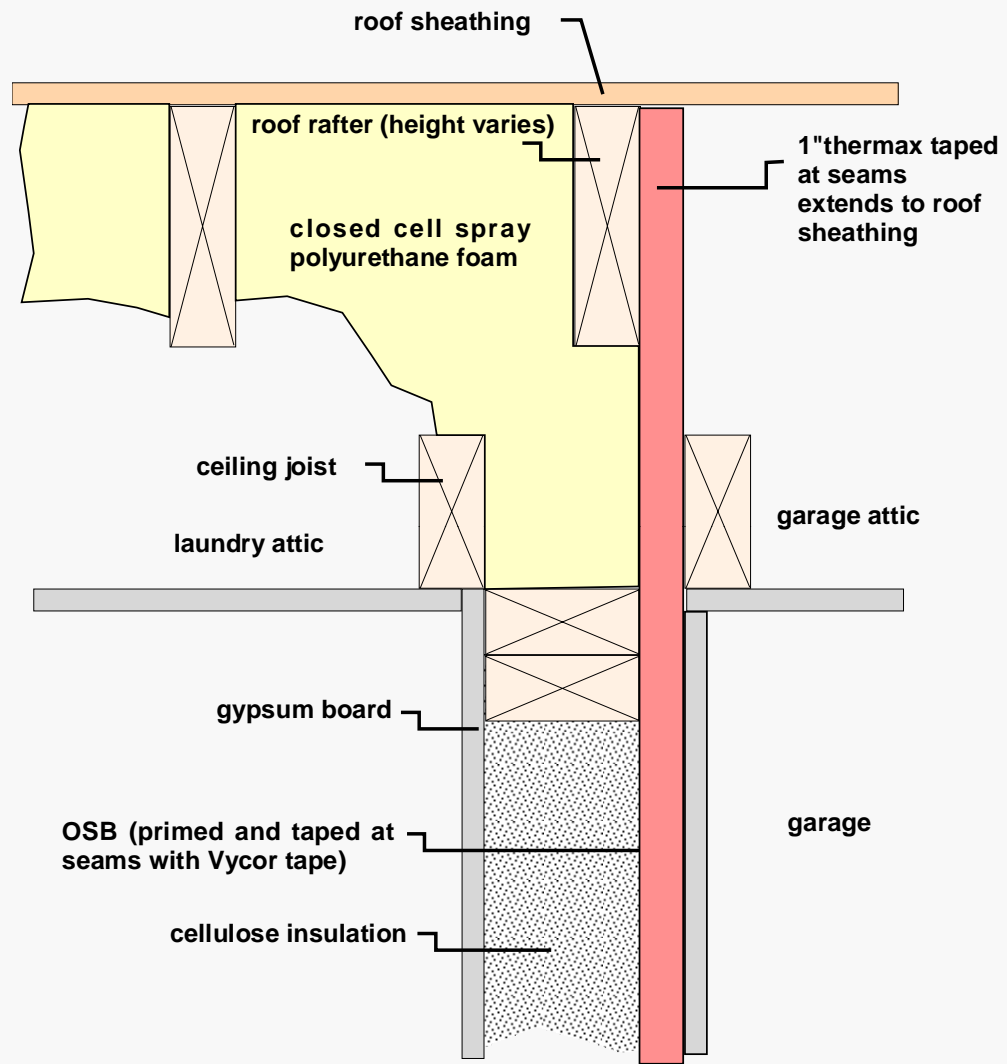


Figure 12. Detail of laundry room/garage wall, laundry room attic and insulated laundry roof.

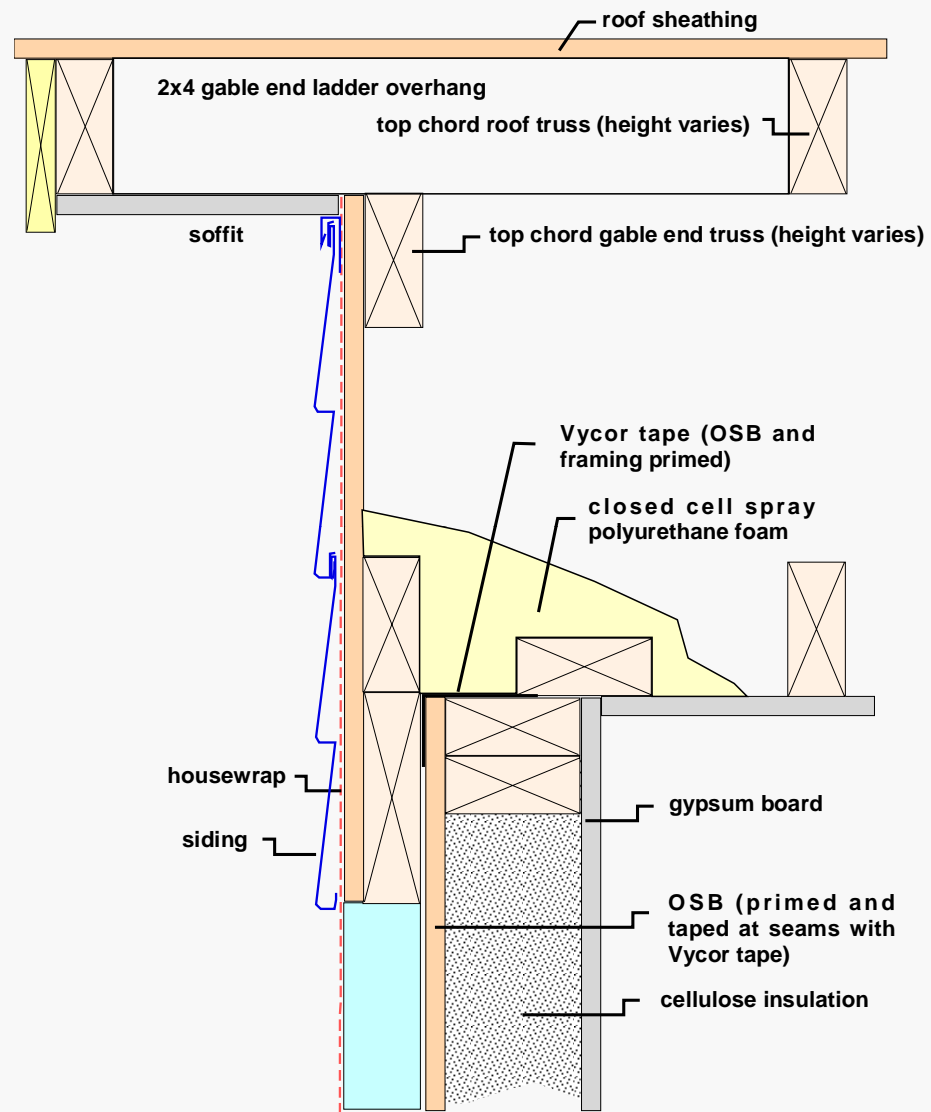


Figure 13. Section through gable end.

4" thermax. All edges sealed w/aluminum tape. All dimensions 1/8 in. smaller than RO size. Minimum RO opening 22x30"

Plywood cover w/3/8" cellular EPDM P-gasket on all four sides of cover

Caulk between GB ceiling and bottom chord and cross pieces

Gypsum board hatch painted to match ceiling color

OSB platform

2x4 to support OSB platform

2x4 fastened to webs or lateral braces

OSB insulation dam around RO

Cellulose insulation

Gypsum board ceiling

Trim all four sides of opening

Position opening to avoid truss webs and lateral braces

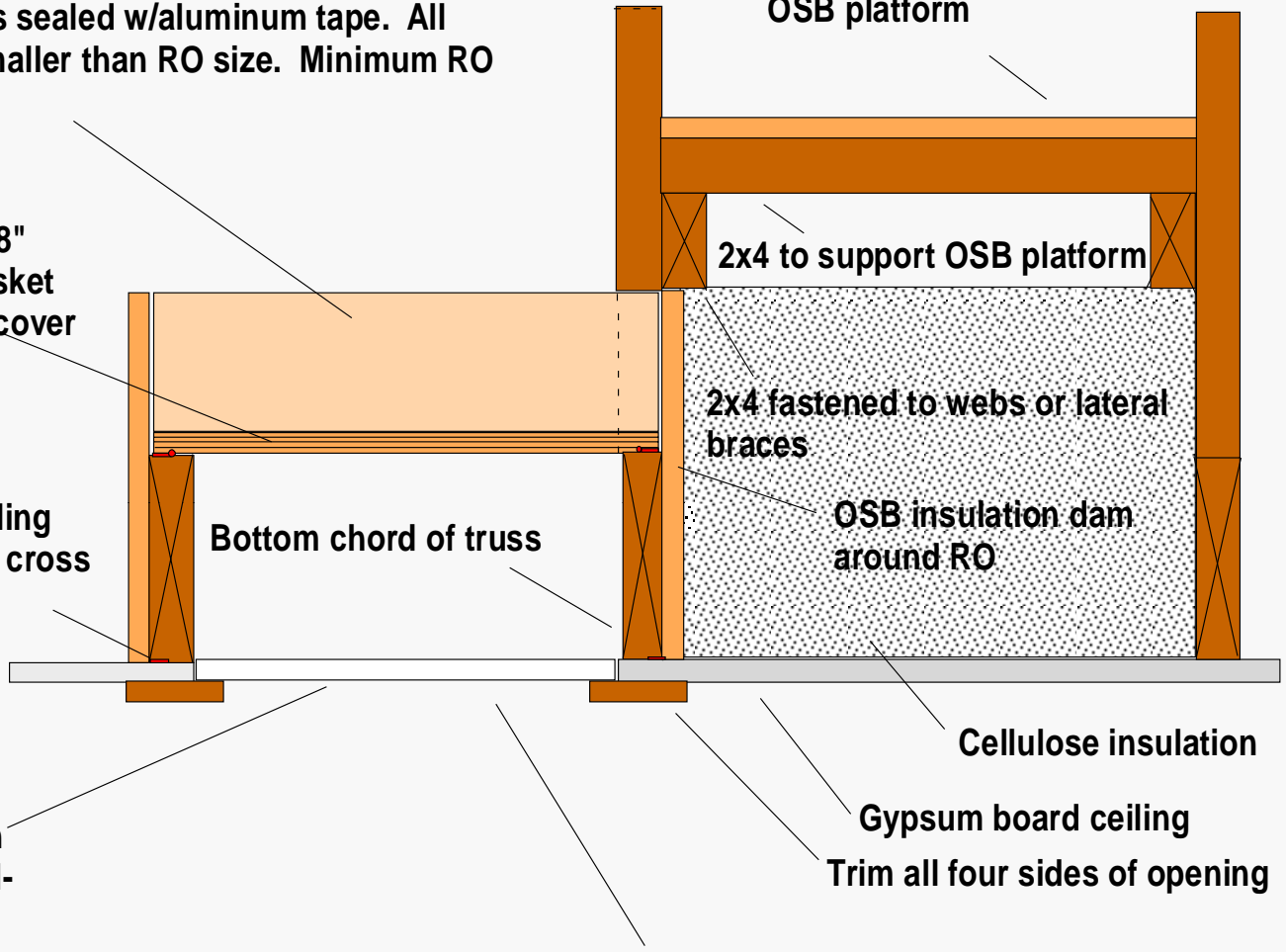


Figure 14. Attic hatch detail.