

Understanding the Dehumidification Performance of Air-Conditioning Equipment at Part-Load Conditions

Hugh I. Henderson, Jr., P.E.¹
Member ASHRAE

Don B. Shirey, III
Member ASHRAE

Richard A. Raustad

Abstract

Cooling coils provide both sensible cooling and moisture removal. Data from field test studies have demonstrated that the moisture removal capacity of a cooling coil degrades at part-load conditions, especially when the supply air fan operates continuously. Degradation occurs because moisture that condenses on the coil surfaces during the cooling on cycle evaporates back into air stream when the coil is off. This paper presents initial laboratory and field results that characterize the part-load dehumidification performance of various cooling systems. The lab and field measurements compare well to theoretical algorithms that have been developed to predict this part-load phenomenon (Henderson and Rengarajan 1996). The lab data have also confirmed many of the underlying assumptions of the theoretical model. The paper also discusses the types of applications and control modes where part-load latent degradation is the greatest concern.

Introduction and Background

Cooling coils provide both sensible cooling and moisture removal. Moisture removal or dehumidification occurs when coil surfaces are colder than the dew point temperature of the entering air. The mix of latent and sensible capacity provided by a cooling coil at steady-state conditions is well understood. The ratio of sensible to total capacity – or the sensible heat ratio (SHR) – depends on the physical characteristics of the coil as well as the refrigerant temperature inside the tube and the temperature, humidity and flow rate of the entering air stream.

Data from field test studies (Khattar et al. 1985; Henderson 1998) have demonstrated that the moisture removal capacity of a cooling coil degrades at part-load conditions – especially when the supply air fan operates continuously. Degradation occurs because moisture that condenses on the coil surfaces during the cooling on cycle evaporates back into air stream when the coil is off. The data in Figure 1 show that the off-cycle performance of the coil is essentially adiabatic with sensible cooling provided by the evaporation of moisture back into the air stream. The off-cycle sensible cooling diminishes with time as the available quantity of moisture on the coil surfaces decreases. As a result, a cooling coil that cycles on and off in response to a control or thermostat signal will have less net moisture removal as the system spends relatively more time with the coil deactivated.

¹ Hugh Henderson is Principal at CDH Energy Corp. in Cazenovia, New York. Don Shirey is a Program Director and Richard Raustad is a Senior Research Engineer at the Florida Solar Energy Center in Cocoa, Florida.

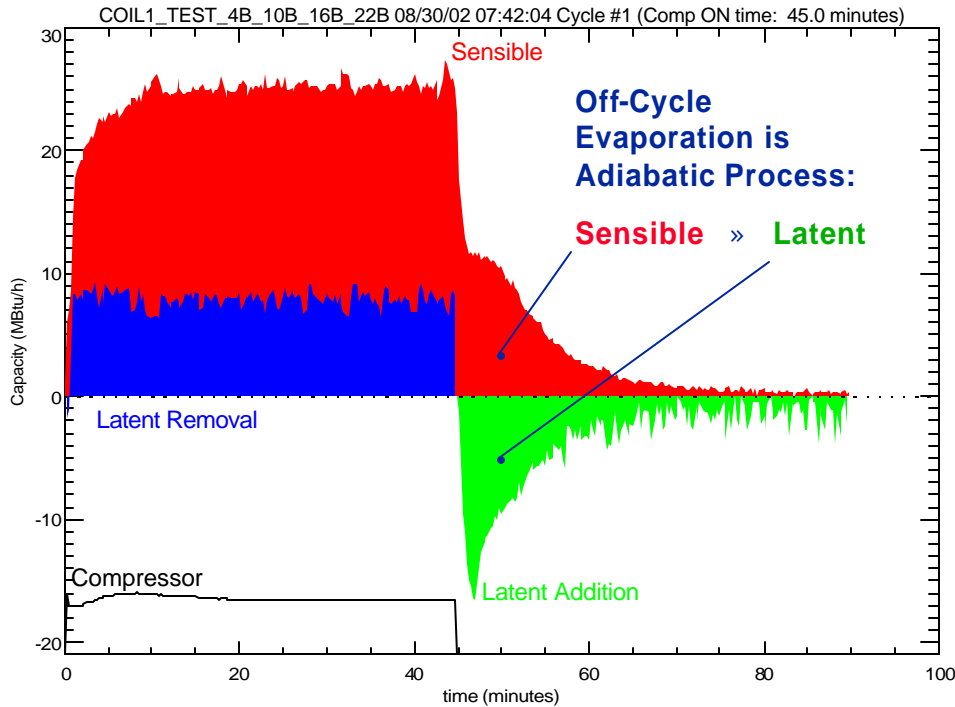


Figure 1. Transient Sensible and Latent Capacity of Cooling Coil Over an Operating Cycle (supply air fan operates continuously)

This paper introduces the concept of latent degradation and presents the measured results from recent laboratory and field studies that further quantify the impact of this phenomenon.

Latent Degradation Concepts

Because of the off-cycle evaporation phenomenon described above, moisture is only removed from the space when it leaves through the condensate drain. Therefore moisture removal only begins when enough moisture has built up on fins and coil surfaces so that condensate drains from the system. Figure 2 graphically shows these concepts. An amount of moisture (M_o) must first build up on the coil before condensate falls from the coil. After this time (t_o), all the latent capacity provided by the coil is “useful” moisture removal since this condensate leaves the system. When the coil cycles off and the supply air fan continues to operate, the initial mass of moisture buildup on the coil (M_o) evaporates back into the air stream. If the cooling coil cycles back on before all the moisture has evaporated, then the time until the first condensate removal is reduced for this cooling cycle since the coil starts out partially wetted.

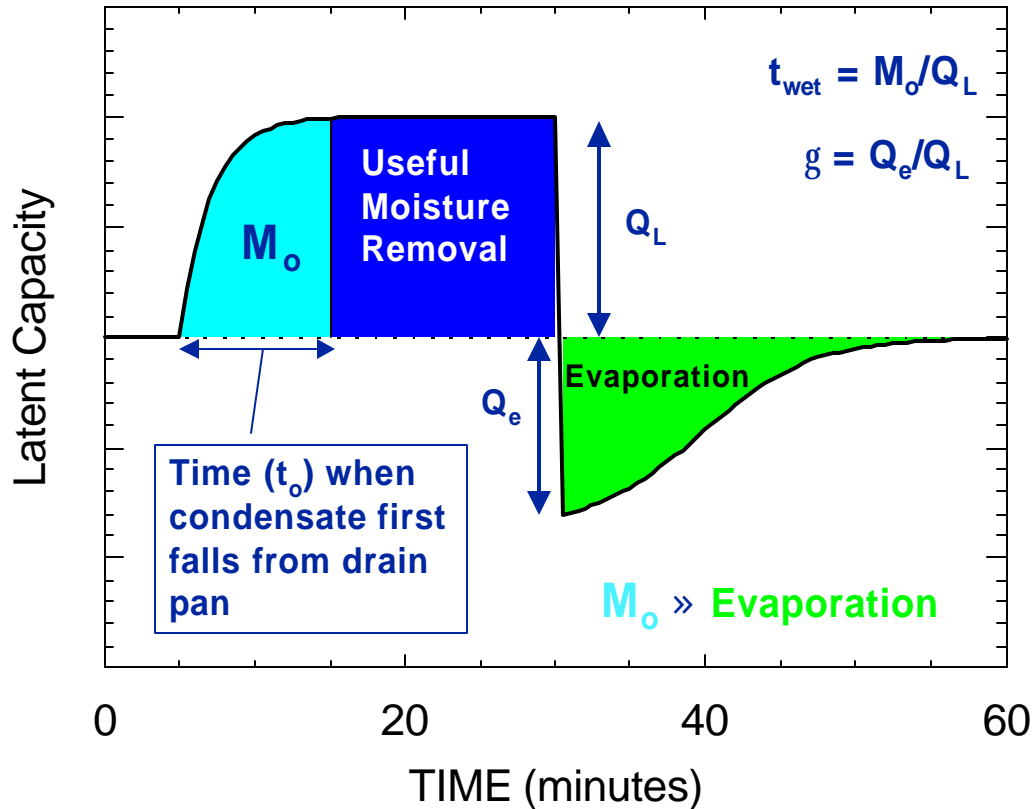


Figure 2. Concepts of Moisture Buildup and Evaporation on the Coil

Several useful dimensionless or normalized parameters can be derived from the hypothetical example above. The ratio of the coil's moisture holding capacity (M_o) and steady-state latent capacity (Q_L) is defined as t_{wet} : the nominal time for moisture to fall from the coil (starting from a dry coil and ignoring transient effects at startup). The ratio of the initial moisture evaporation rate (Q_e) and the steady-state latent capacity (Q_L) also provides a normalized measure of transient, part load performance.

Figure 3 shows the measured impact of part-load operation on the SHR of a conventional, single-speed, water-to-air heat pump with continuous supply air fan operation. When the system operates at steady-state conditions (i.e., a runtime fraction of one), the effective SHR of the system is 0.76. However, as the compressor runs less often, the effective SHR of the cooling coil increases, meaning that less moisture removal is provided. This cooling system only provides sensible capacity once the runtime fraction drops below about 0.4. Most cooling coils spend a large portion of the annual operating hours at this part-load condition. As a result, there is considerable degradation in the moisture removal capacity of this system across the cooling season. This part-load degradation causes space humidity levels to drift upwards, especially on days when cooling loads are modest.

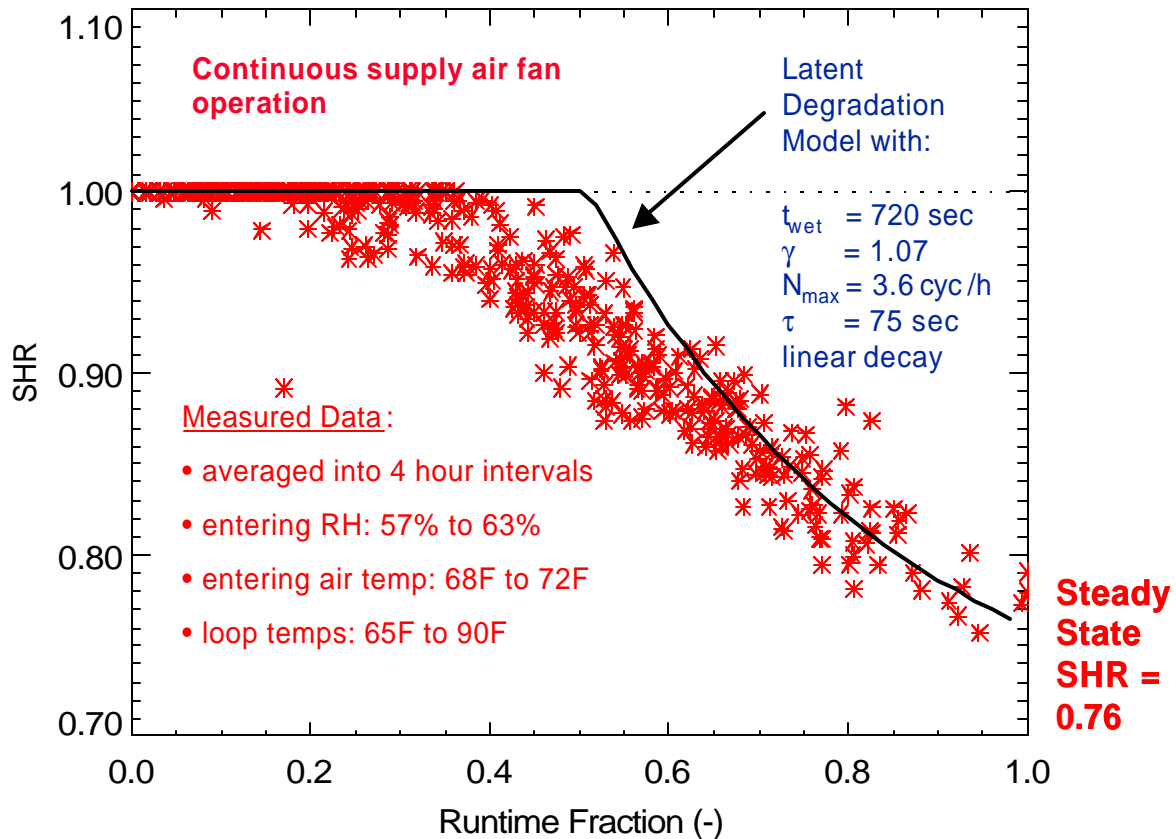


Figure 3. Field Data Showing the Net Impact of Part-Load Operation on Sensible Heat Ratio (Henderson 1998)

Henderson and Rengarajan (1996) developed a mathematical model to predict the degradation of latent (dehumidification) capacity at part-load conditions. This model, shown as a line on Figure 3, demonstrates good agreement with this experimental data set. The model parameters t_{wet} and γ were derived from on-site measurements for this system to be 720 seconds and 1.07 respectively (Henderson 1998). The parameter τ is the time constant associated with latent capacity at startup (in this case 75 seconds). N_{max} is the maximum cycling rate of the thermostat as defined in the NEMA thermostat test standard (1990). The maximum cycling rate of 3.6 cycles per hour is more rapid than the normally assumed cycling rate of 3 cycles per hour (which corresponds to 10 minutes on and 10 minutes off at 50% load).

A project was initiated in 2001 to collect additional laboratory and field measurements of part-load cooling coil performance. These data are being used to verify the existing latent degradation mathematical model, and to refine or extend the model to predict latent degradation for a wider range of cooling systems. Initial laboratory and field test results are presented below.

Laboratory Test Results

A psychrometric testing facility was setup for testing air-conditioning systems with cooling capacities up to 3 tons (10.5 kW). The test facility consists of indoor and outdoor chambers capable of maintaining constant temperature and humidity conditions as specified in ASHRAE Standard 37. The instrumentation used in the lab is schematically shown in Figure 4. The instrumentation and room controls were configured to allow for transient testing of air conditioner performance. For instance, high precision chilled mirror dew point hygrometers with sampling trees were used instead of wet-bulb socks because of their faster response time. Similarly, the conditioning equipment and controls in the indoor and outdoor chambers were designed to hold constant space conditions as the cooling system cycled on and off.

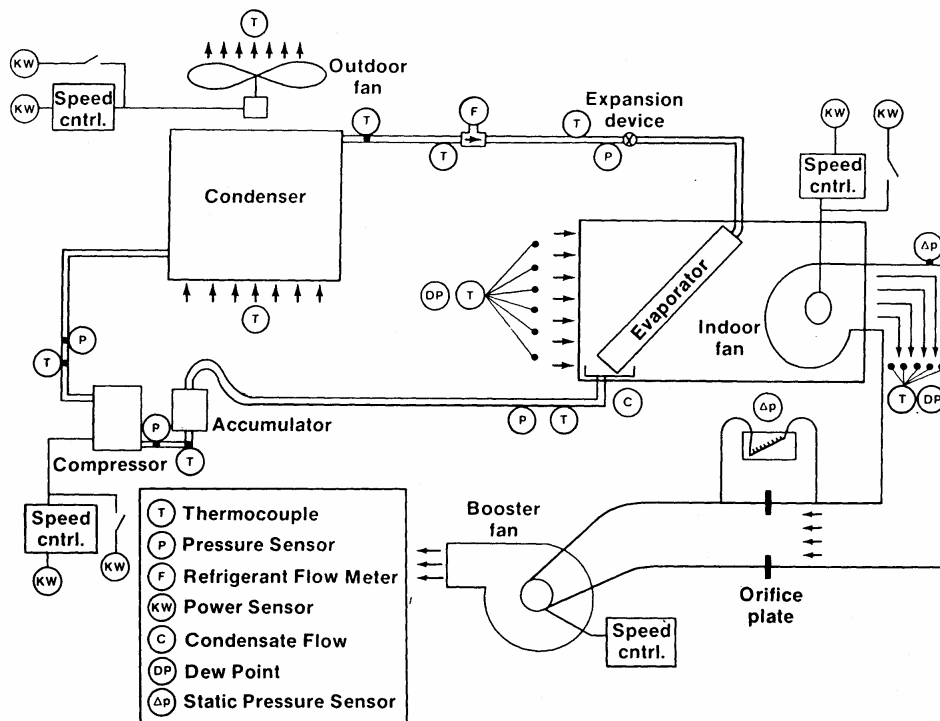


Figure 4. Schematic of Psychrometric Chambers/Coil Testing Apparatus at FSEC

Data from a typical laboratory test at the nominal operating point of 80°F (26.7°C) dry bulb, 67°F (19.4°C) wet-bulb temperatures are shown in Figure 5. The plot shows the second in a series of on/off cycles where the compressor and supply air fan operate for 45 minutes, and then the compressor is turned off while the fan continues to operate for an additional 45 minutes. The sensible and latent cooling capacities show a slight delay on startup, but after 40 minutes the system has reached steady state. At this point the latent capacity calculated from psychrometric properties of moist air and the measured airflow (7.4 MBtu/h [2.2 kW]) is approximately equal to the latent capacity determined from the condensate flow rate (6.7 MBtu/h [2.0 kW]). There was a delay of 16.3 minutes for the first condensate pulse to fall from the drain pan of this system (when starting from a dry coil).

At the beginning of the compressor off cycle (time = 45 minutes), the sensible capacity quickly drops as the system makes the transition to an evaporative cooler. Starting at the transition point identified in Figure 5 as “gamma” (11.9 MBtu/h [3.5 kW]), the sensible cooling is approximately equal to the latent energy associated with moisture addition. Integrating the latent (or sensible) capacity over the off cycle provides an indication of the amount of moisture that is retained on the coil surfaces. In this case, starting the integration after a one-minute delay and continuing to the designated integration point, a moisture mass of about 2 lbs [0.9 kg] is retained on the coil. Dividing the moisture mass by the steady-state latent capacity indicates that t_{wet} is about 17 minutes in this case, which is very close to the measured condensate delay time of 16.3 minutes.

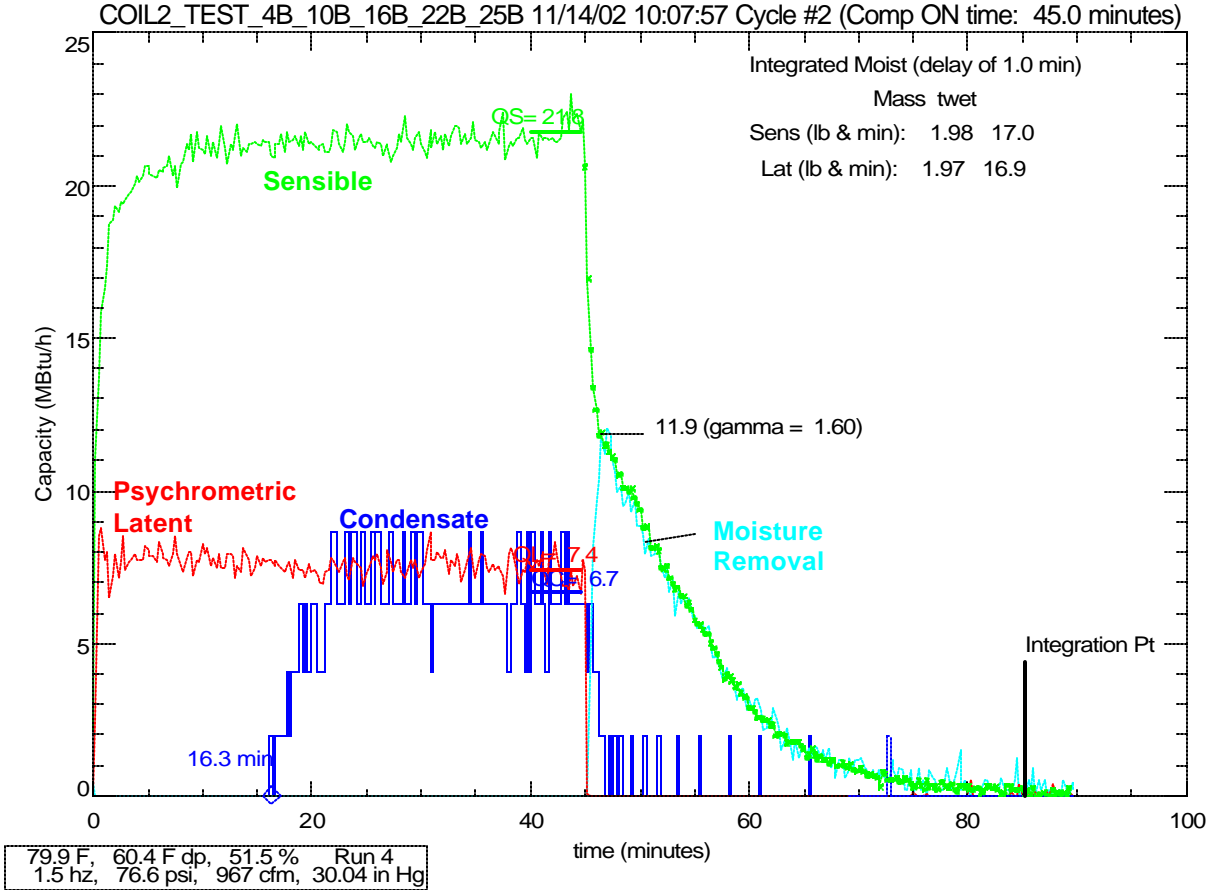


Figure 5. Laboratory Test Data for a Typical Test Run

This type of testing has been completed for several direct-expansion cooling coils. Each coil is tested at various entering air conditions (temperature/humidity), air flow rates, and coil refrigerant temperatures. In addition, several quasi-steady cyclic tests were completed with differing lengths of on and off times. The lengths of the on and off times were selected to correspond with the NEMA thermostat curve with a maximum cycle rate of 3 cycles/hour (NEMA 1990).

Overall, the test results from the laboratory tend to confirm the following trends:

- The off-cycle evaporation process becomes adiabatic after refrigerant migration inside the coil and system has subsided 1 or 2 minutes after the compressor stops operating. The type of expansion device has some impact on the duration of the transition.
- The mass of moisture retained on the coil surface is mostly a function of coil surface geometry with some secondary dependence on entering dew point and face velocity.
- The calculated values of the model parameter t_{wet} are generally in line with the measured condensate delay time. The delay time is a strong function of the entering air conditions. As entering conditions are more humid, moisture builds up faster on the coil so the time to the first condensate pulse is shorter. For the coil shown in Figure 5, the delay time varies from 40 to 10 minutes as the entering dew point goes from 50°F to 70°F [10°C to 21°C].
- The moisture evaporation rate during the off-cycle is function of the wet-bulb depression (i.e., the difference between the wet-bulb and dry-bulb temperatures of the entering air), as would be expected for an evaporative cooler. The retained moisture on the cooling coil evaporates more quickly with drier inlet air conditions.
- The off-cycle evaporation trend implies that the wetted surface area of the coil decreases in proportion to the remaining moisture mass. So the wet coil acts as an evaporative cooler with progressively less surface area, as moisture is evaporated from the coil.

The table below compares the overall latent performance parameters determined for the coils that have been tested to date. The tested coils have ranged in size from 1.5 to 3 tons [5.3 to 10.5 kW]. The total surface area of the fins varies by nearly a factor of 2 from the largest to the smallest coil. Surprisingly, the amount of moisture retained on the coil surface showed much less variation, ranging from 1.9 to 2.1 lbs [0.86 to 0.95 kg]. The retained moisture per unit surface area was 50-60% greater for Coil 4, the vertical slab coil with wavy fins. The time for condensate to first fall from the coil varied from 13 minutes up to 33 minutes, with similar variations for the model parameter t_{wet} . Similar results and trends have been realized from the field measurements for other cooling coils.

Table 1. Comparing Measured Performance Parameters for Lab Tested Cooling Coils

	Cooling Capacity (ton / kW)	Fin Surface Area (ft² / m²)	Retained Moisture Mass (lb / kg)	Condensate Delay Time (min)	t_{wet} (min)
Coil 1 (Slanted slab, 3 row, 13 fpi, plain fins, orifice)	3.0 / 10.5	243.8 / 22.7	2.1 / 0.95	13.5	16.5
Coil 2 – Normal Air Flow (A-coil, 3 rows, 15.5 fpi, lanced sine-wave fins, TXV)	2.4 / 8.4	237.8 / 22.1	2.0 / 0.91	16.3	17.0
Coil 3 – Coil 2 with Low Air Flow (A-coil, 3 rows, 15.5 fpi, lanced sine-wave fins, TXV)	1.5 / 5.3	237.8 / 22.1	2.0 / 0.91	32.5	29.0
Coil 4 (vert. slab, 2 rows, 14 fpi, wavy fins, orifice)	1.8 / 6.3	138.3 / 12.8	1.9 / 0.86	23.5	18.5

- Notes: 1- Cooling capacity includes sensible and latent cooling at nominal conditions. Nominal conditions correspond to ASHRAE Test A or ISO T1 test points.
2- Surface area is gross fin area (coil face area x coil depth x fin spacing x 2).
3- Condensate delay time and t_{wet} are at nominal conditions

The quasi-steady lab testing also confirmed that the model by Henderson and Rengarajan (1996) could reasonably predict part-load performance over a range of operating conditions. The data points shown in Figure 6 correspond to the first, second, and third operating cycles at the same inlet air conditions and discrete runtime fractions. Typically the second and third cycles for a given runtime fraction are in close agreement, implying that quasi-steady conditions have been achieved by the second cycle. The triangles from the third cycle correspond well to the latent degradation model, which is shown as a line on the plot. The parameters for the model include a t_{wet} of 17.3 minutes and gamma of 1.5.

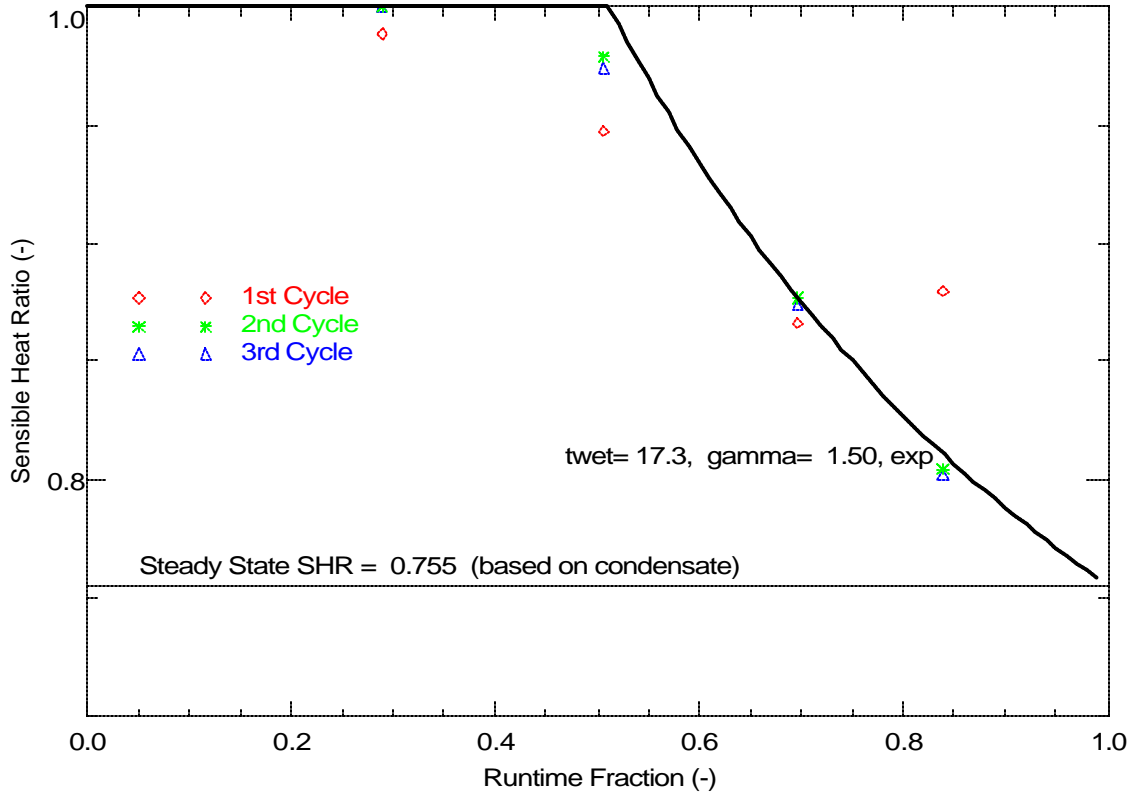


Figure 6. Comparing Measured Latent Degradation to LHR Model at Nominal Conditions (Coil 2)

The laboratory testing also evaluated cooling coils in the AUTO fan mode, with the supply air fan cycling on and off with the compressor. Figure 7 shows that some degradation in latent capacity is apparent in this operating mode, even though it would seem that very little off-cycle evaporation should occur with the fan off. So far, most of the coils tested in the lab have shown some amount of degradation in the AUTO fan mode. Figure 8 shows similar part-load data from a residential field test site where significant degradation was also apparent in the AUTO fan mode. The limited amount of data in the constant fan mode for this field test site also agreed well with the latent degradation model.

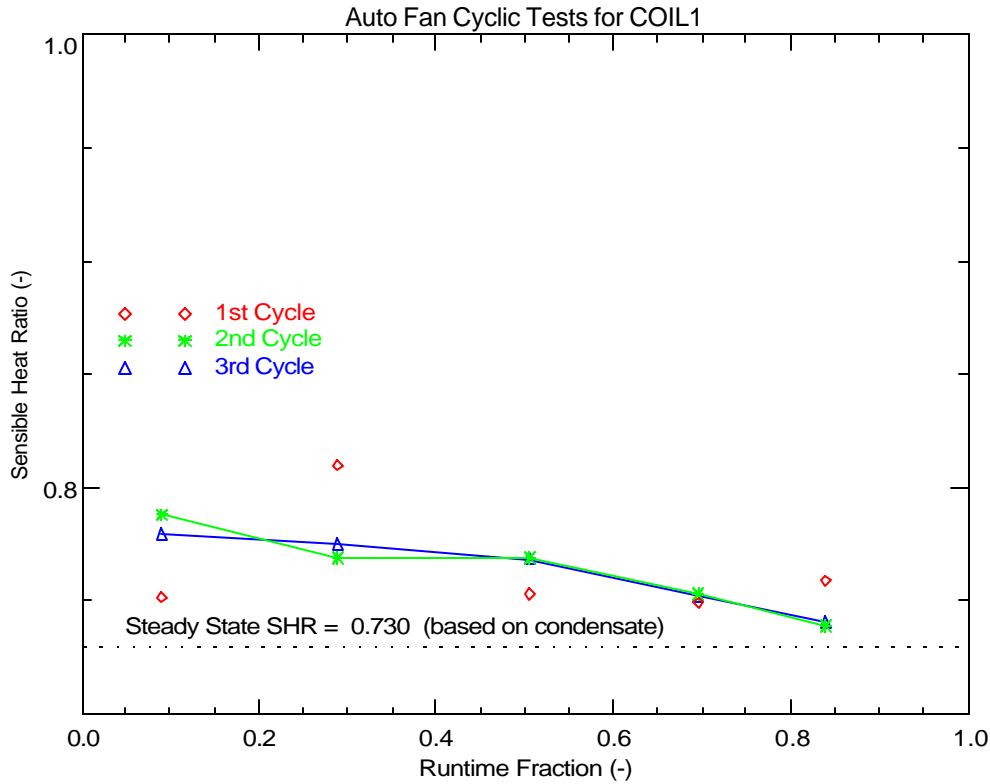


Figure 7. Measured Latent Degradation with Cycling Fan at Nominal Conditions

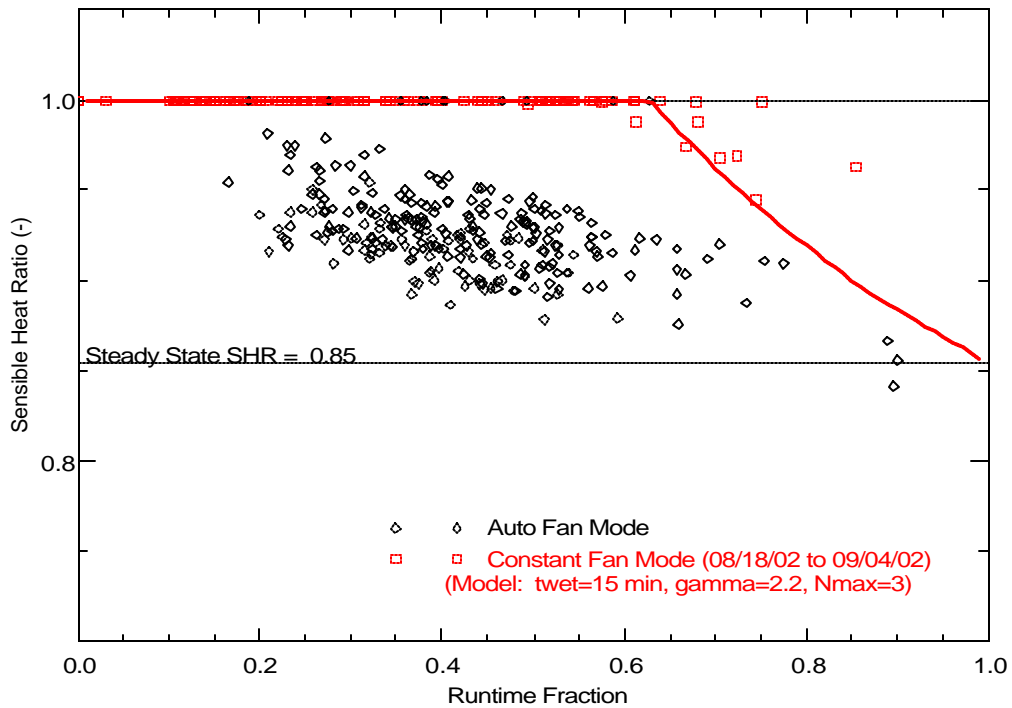


Figure 8. Measured Latent Degradation from a Residential Field Test Site (AUTO and CONSTANT Fan Modes)

Implications of Latent Degradation

The data collected from the project's field test sites also confirmed the general findings of the laboratory testing. The field measurements have also demonstrated the impact that control issues such as multiple capacity stages have on latent degradation. For instance, measurements on a 10-ton [35 kW] packaged rooftop in a retail application showed that having two stages of cooling capacity significantly reduced the impact of latent degradation since the system spends many hours with first stage operating. Therefore, latent degradation was modest in spite of constant fan operation. Similarly, a two-speed residential cooling system installed in a Florida home was shown to experience very little latent degradation. Field testing of a constant air volume chilled water coil in a Florida commercial building has shown latent degradation impacts are significant as the chilled water coil modulates to match the sensible cooling load requirements.

The latent degradation model from Henderson and Rengarajan (1996) has been incorporated into several whole building hourly simulation models to predict the degradation of latent capacity at part-load conditions (Shirey and Rengarajan 1996; EPRI 2000; EPA 2001). The model is also scheduled to be incorporated into EnergyPlus (2003) by Spring 2004. Other building simulation models do not consider this part-load degradation effect and therefore tend to over estimate the moisture removal capacity of cooling equipment and predict that space humidity levels are maintained at lower levels than is observed in practice. Kosar et al. (1998) showed that ignoring latent degradation causes hourly building simulation models to under predict space humidity levels by 5-10% RH under typical conditions.

Summary

Latent degradation is most significant when the fan operates continuously on a single-stage cooling coil. However, some degradation also occurs on all modulated and staged cooling systems. Continuous supply air fan operation is required in nearly all commercial buildings in order to provide the outdoor air ventilation requirements prescribed by ASHRAE Standard 62 (ASHRAE 2001) and equivalent international ventilation standards. Constant fan operation is also becoming more popular for residential applications for a variety of reasons, including the use of various air cleaning technologies such as high-efficiency filters and UV_c lamps. The impact of latent degradation must be considered in these circumstances.

In the US, most residential air conditioners cycle the supply air fan on and off with the cooling coil cycle in response to the thermostat signal (AUTO fan control). Homeowners in humid regions inherently know that this operating mode is preferable since it provides reasonable moisture removal. However, laboratory and field data have confirmed that even AUTO fan control can result in significant degradation in dehumidification performance at part load. This project is working towards quantifying the equipment characteristics, control modes, and operating conditions where latent degradation is a concern. Algorithms to predict latent degradation are being incorporated into hourly whole building energy analysis tools in order to allow building designers and equipment manufacturers to quantify the impact as well.

Acknowledgements

This paper was prepared with the support of the U.S. Department of Energy, under Award No. DE-FC26-01NT41253. However, any opinions, findings, conclusions, or recommendations expressed herein are those of the authors and do not necessarily reflect the views of the DOE.

References

ASHRAE. 2001. ASHRAE Standard 62-2001, Ventilation for Acceptable Indoor Air Quality. Atlanta: American Society of Heating, Refrigerating and Air-Conditioning Engineers, Inc.

EPA. 2001. Indoor Humidity Assessment Tool – Reference Manual. Available at www.epa.gov/iaq/schooldesign/saves.html.

EPRI. 2000. Supermarket Simulation Tool Version 3: Installation and User Guide, Electric Power Research Institute, Customer Solutions Group, Palo Alto, CA. CM-111112-R4.

EnergyPlus. 2003. Engineering Reference Manual for Energy Plus. Available at www.energyplus.gov.

Henderson, H., and K. Rengarajan. 1996. A model to predict the latent capacity of air conditioners and heat pumps at part-load conditions with constant fan operation. *ASHRAE Transactions* 102(1): 266-274.

Henderson, H. 1998. The impact of part-load air-conditioner operation on dehumidification performance: Validating a latent capacity degradation model. Presented at ASHRAE's IAQ & Energy '98 conference. New Orleans, LA. October.

Khattar, M., N. Ramanan, and M. Swami. 1985. Fan cycling effects on air conditioner moisture removal performance in warm, humid climates. Presented at the International Symposium on Moisture and Humidity. April. Washington, D.C.

Kosar, D.R., Witte, M.J., Shirey, D.B., and Hedrick, R.L. "Dehumidification Issues of Standard 62-1989", *ASHRAE Journal*, Vol. 40, No. 3, March 1998.

NEMA. 1990. Residential Controls -- Electric Wall-Mounted Room Thermostats, NEMA Standards Publication No. DC 3. National Electrical Manufacturers Association, Washington, DC.

Rengarajan, K., Shirey, D.B., and Raustad, R.A. 1996. Cost-effective HVAC technologies to meet ASHRAE Standard 62-1989 in hot and humid climates. *ASHRAE Transactions* 102(1): 166-182.

Shirey, D.B. and K. Rengarajan. Impacts of ASHRAE Standard 62-1989 on small Florida offices. *ASHRAE Transactions* 102(1): 153-165.